

NEISD Department of Testing Services

8961 Tesoro Drive, Suite 500.14
San Antonio, Texas 78217
(210) 407-0178
Fax: (210) 804-7128

What is the Student Portal?

The Student Portal provides students and parents with online access to scores from the Texas Assessment of Knowledge and Skills (TAKS), including TAKS-Modified (but not including TAKS-Alt), and the Texas English Language Proficiency Assessment System (TELPAS) assessments.



Laura Witte
Director of Testing
(210) 407-0235

Sarah Howell
Testing Specialist
(210)407-0234

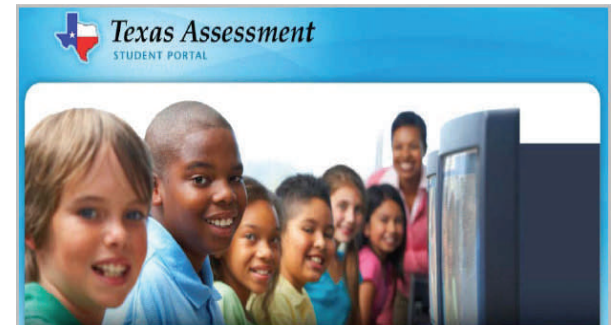
Beverly Lebherz
Testing Analyst
(210) 407-0232

Polo Baez
Materials Handler
(210) 805-5220
Fax: 805-5221



North East Independent School District

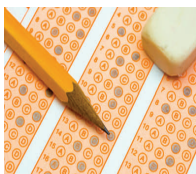
Student Portal for the Texas Assessment Management Systems - TAMS



The Student Portal provides students and parents with online access to scores from the Texas Assessment of Knowledge and Skills.

NEW STUDENT PORTAL FOR STUDENTS AND PARENTS

The Student Portal will be available on the Texas Assessment Management System, delivered through Pearson Access.



The Student Portal will provide students and parents access to scores from the:

- Texas Assessment of Knowledge and Skills (TAKS),
- TAKS–Modified (TAKS-M),
- (Does not include TAKS-Alt).
- The Texas English Language Proficiency Assessment System (TELPAS).

Students who participated in the TAKS October Exit Level retest, (fall 2010), initially received login materials. Most students will not receive login materials until after spring 2011 testing. (May 2011)

Specific Features of the Student Portal

- View student assessment results over the course of a student’s academic career.
- Compare individual student TAKS assessment results to campus, district, and state averages. (Comparisons are not available for exit level retests.)
- Examine student performance on TAKS, including individual student scale scores and objective scores.
- Examine TELPAS examinee proficiency ratings, comprehension scores, and composite score/rating.

Access to the Student Portal

Access to the Student Portal will be located at <http://www.TexasAssessment.com/Students>, on the *Families* tab of the Assessment Management System. From that location, students and parents can click a link that will take them to the Student Portal login page. They are also able to view a user’s guide to the Student Portal, and access additional information about the TAKS and TELPAS assessments.



For more information about how to log in to the Student Portal, see the Student Portal User’s Guide at:

<http://www.TexasAssessment.com/StudentGuide>

How Do I Logon to the Student Portal?

The assessment data in the Student Portal is reached through a Unique Access Code and the student’s birth date as provided on the student’s most recent **Confidential Student Report (CSR)**. Students who have lost their Confidential Student Report are instructed to contact their school to retrieve their Unique Access Code. Once students and parents have logged in, they will be able to examine test scores in detail, as well as link to the user’s guide for the Student Portal and explanations of the test scores as provided on the student’s most recent Confidential Student Report (CSR).

